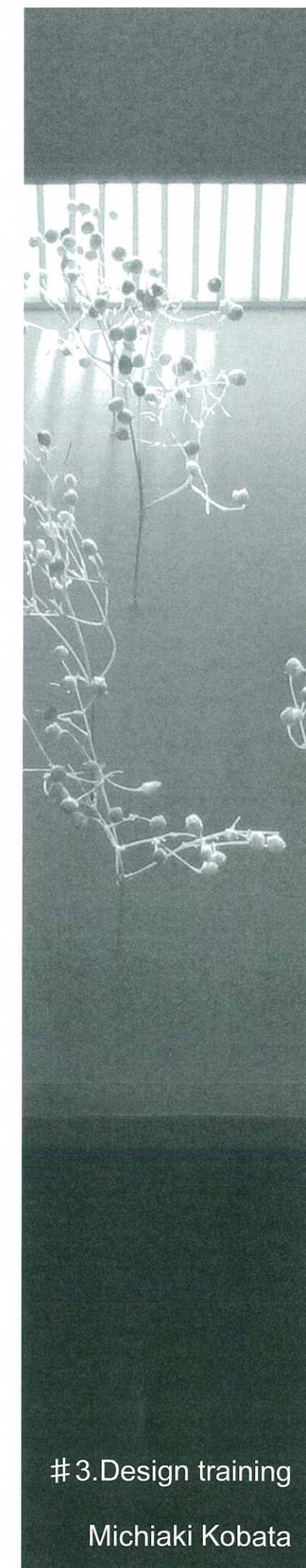


weekend school

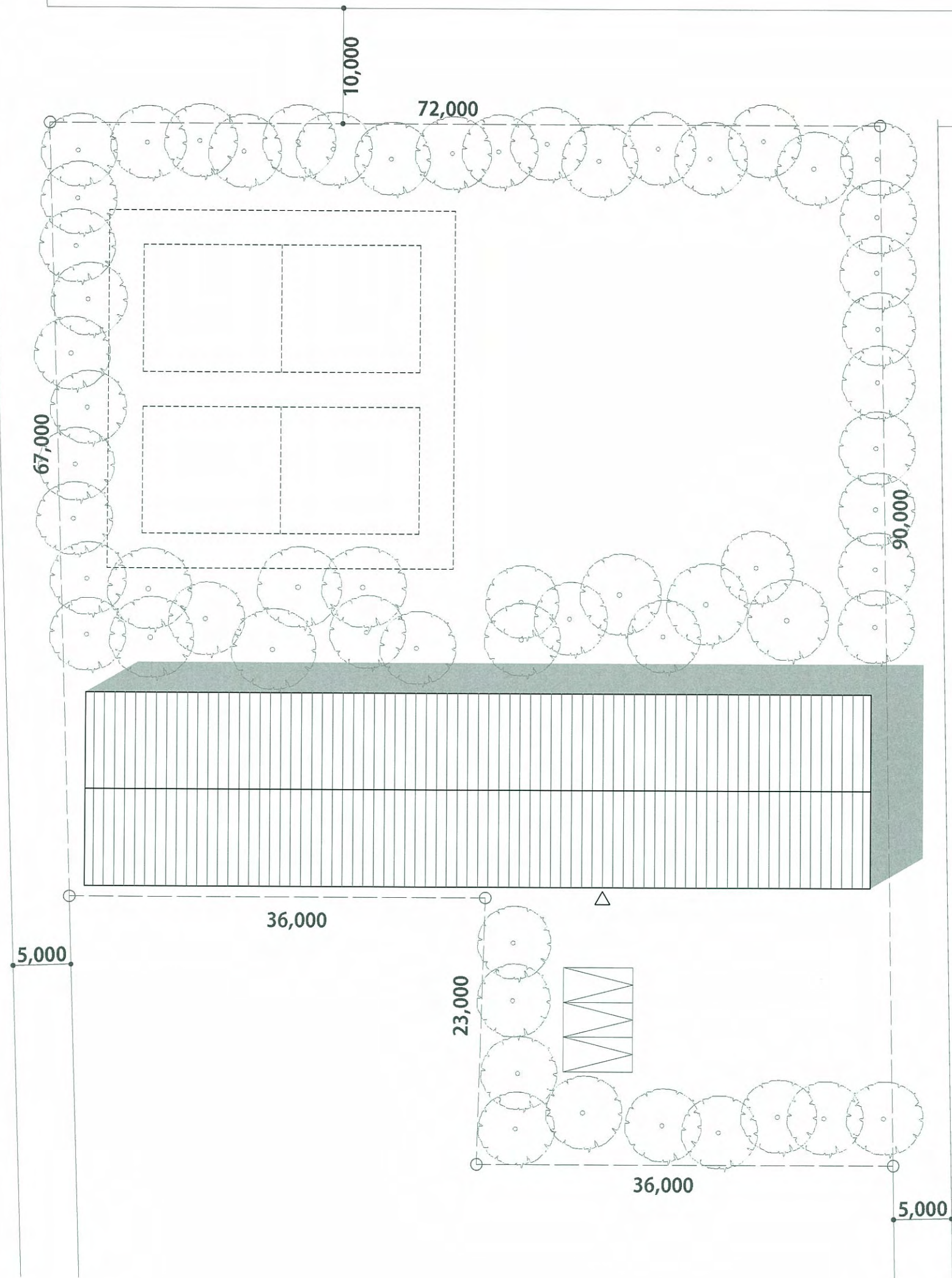


#3.Design training

Michiaki Kobata

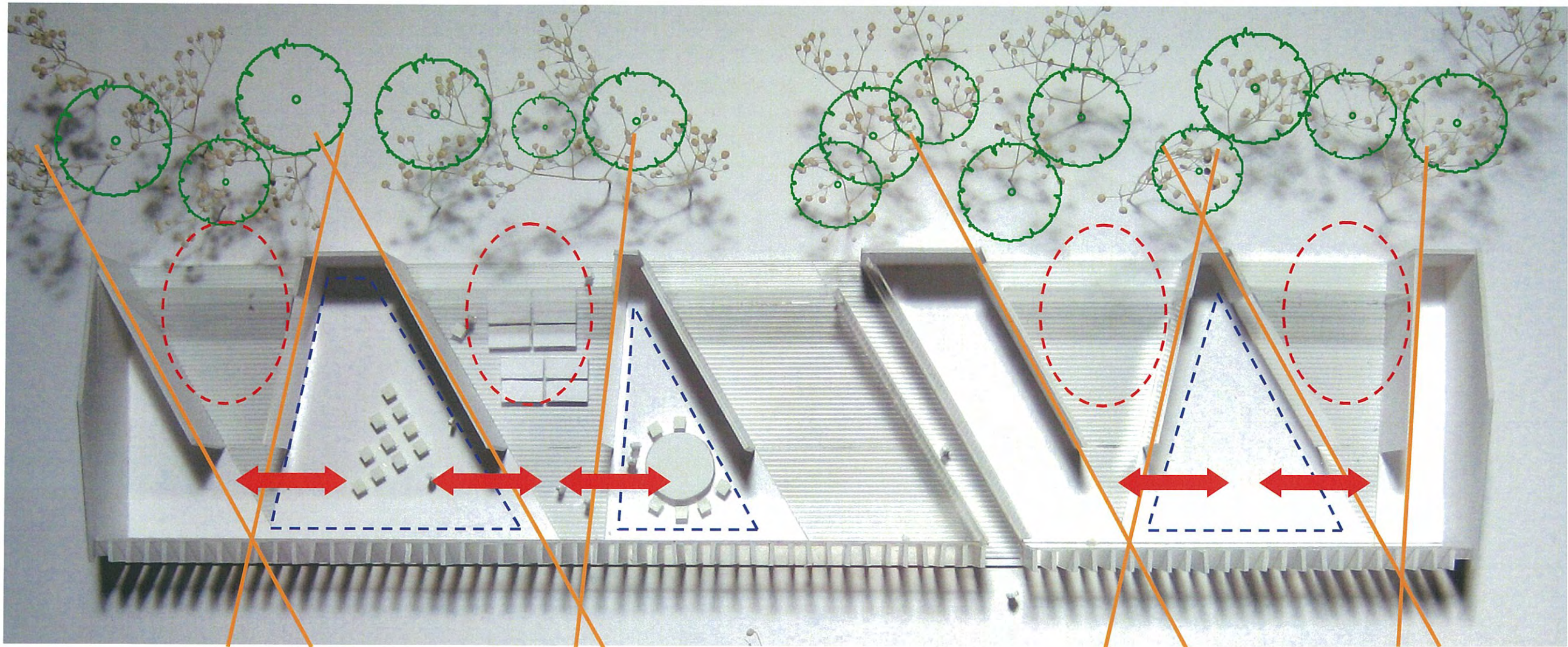
■床面積表





階	容積対象面積		
	増築部分		
	主要室	共用	合計
1階	412.31 m ²	577.69 m ²	990.00 m ²
計	412.31 m ²	577.69 m ²	990.00 m ²
法延床面積	990.00 m ² (300.0坪)		
敷地面積	5679.00 m ²		
許容建蔽率	20.00 %		
許容容積率	40.00 %		
許容容対面積	2271.60 m ²		
容積率	17.43 % ≤ 40 %		

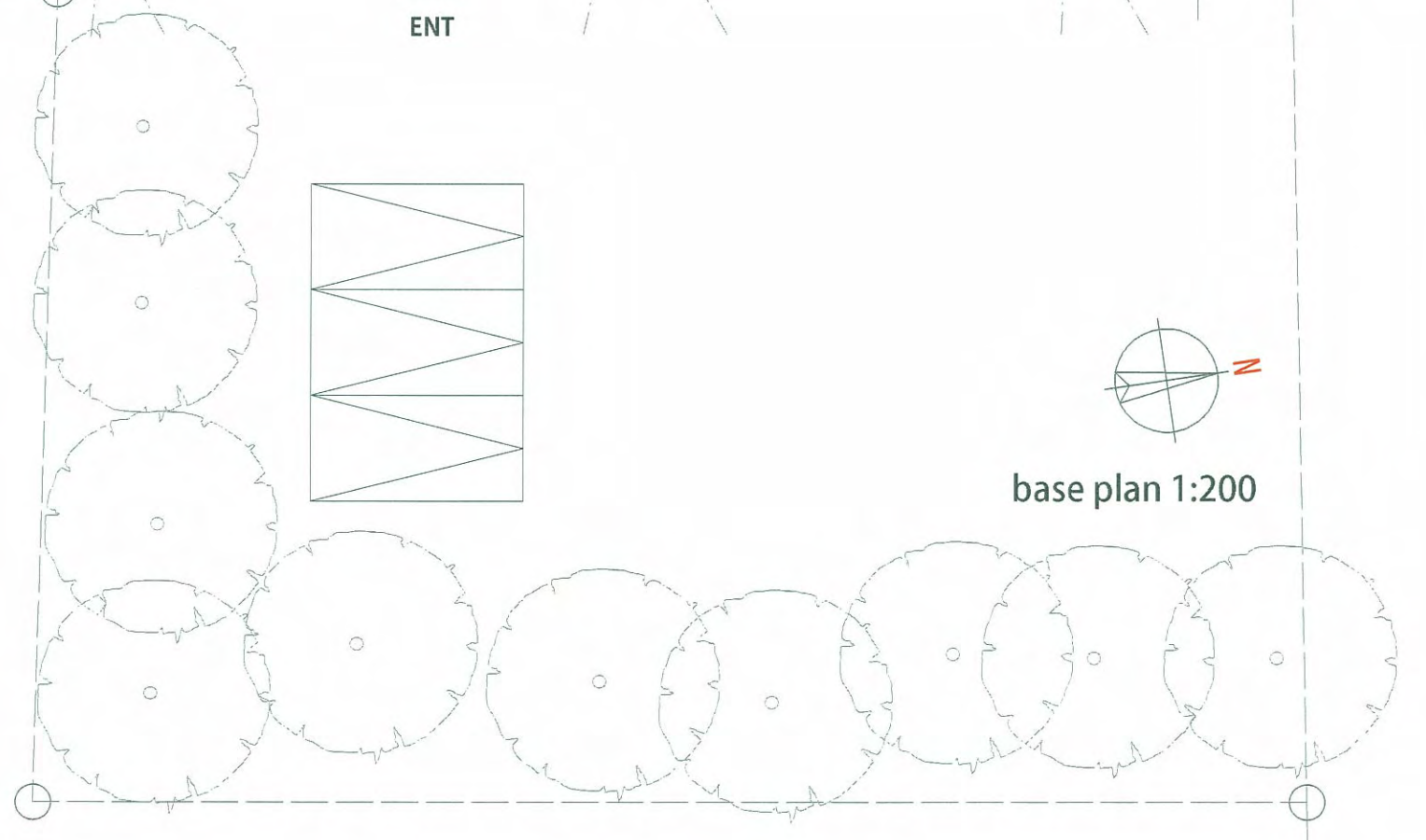
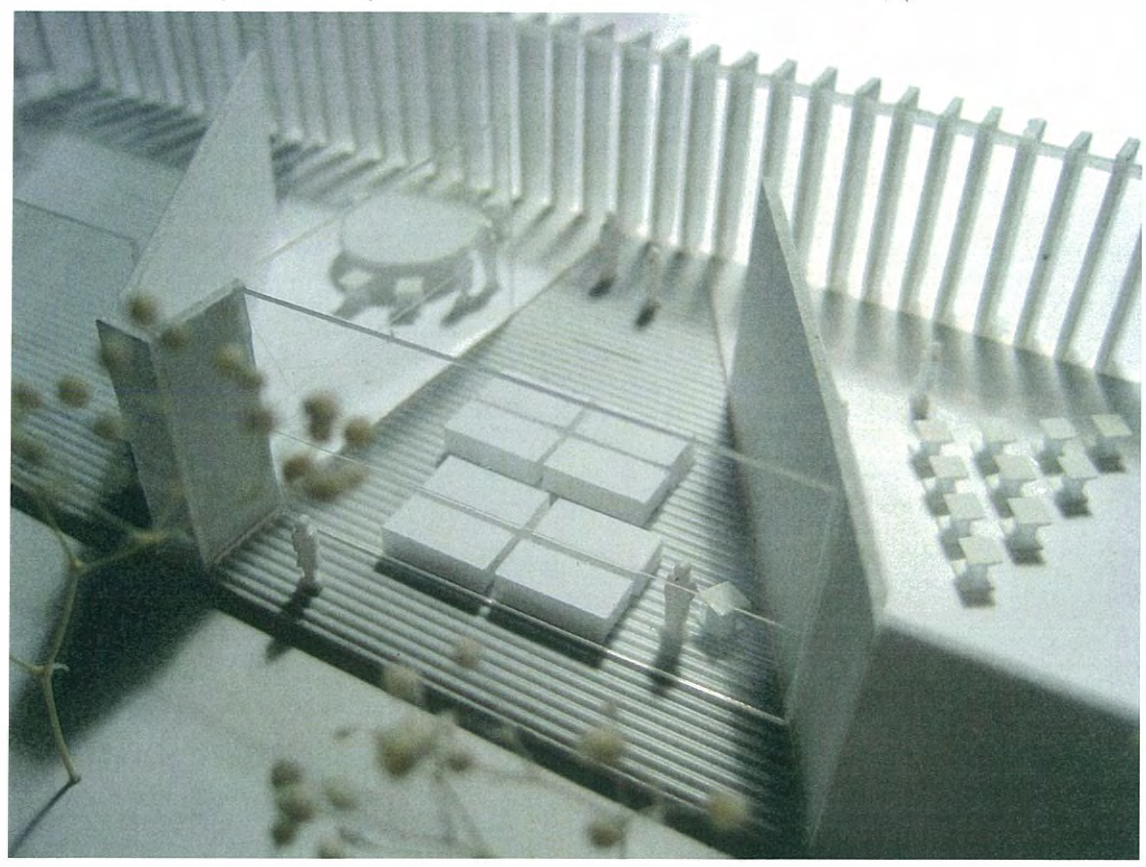
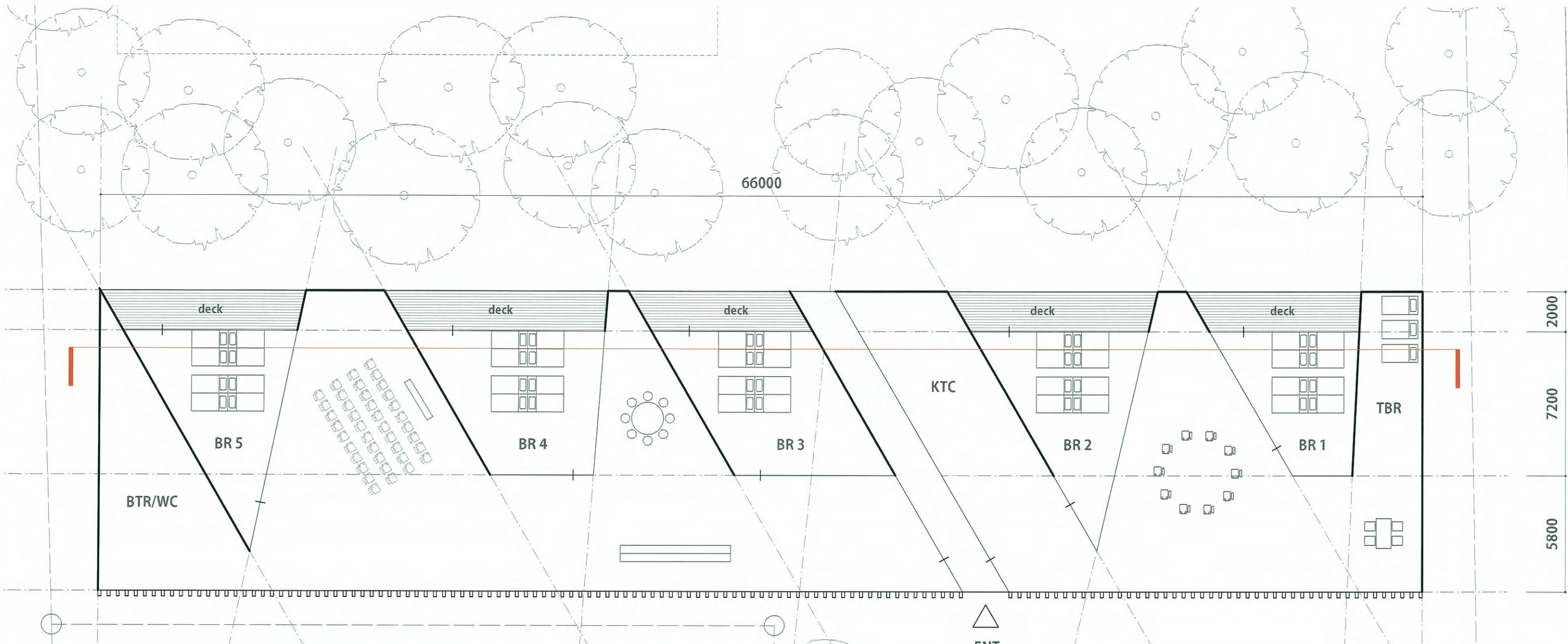


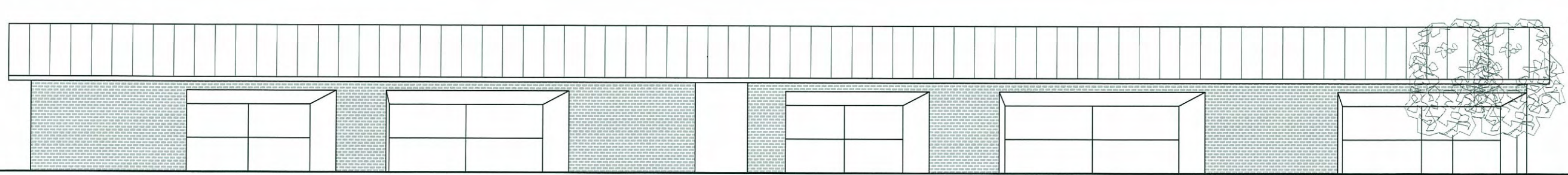
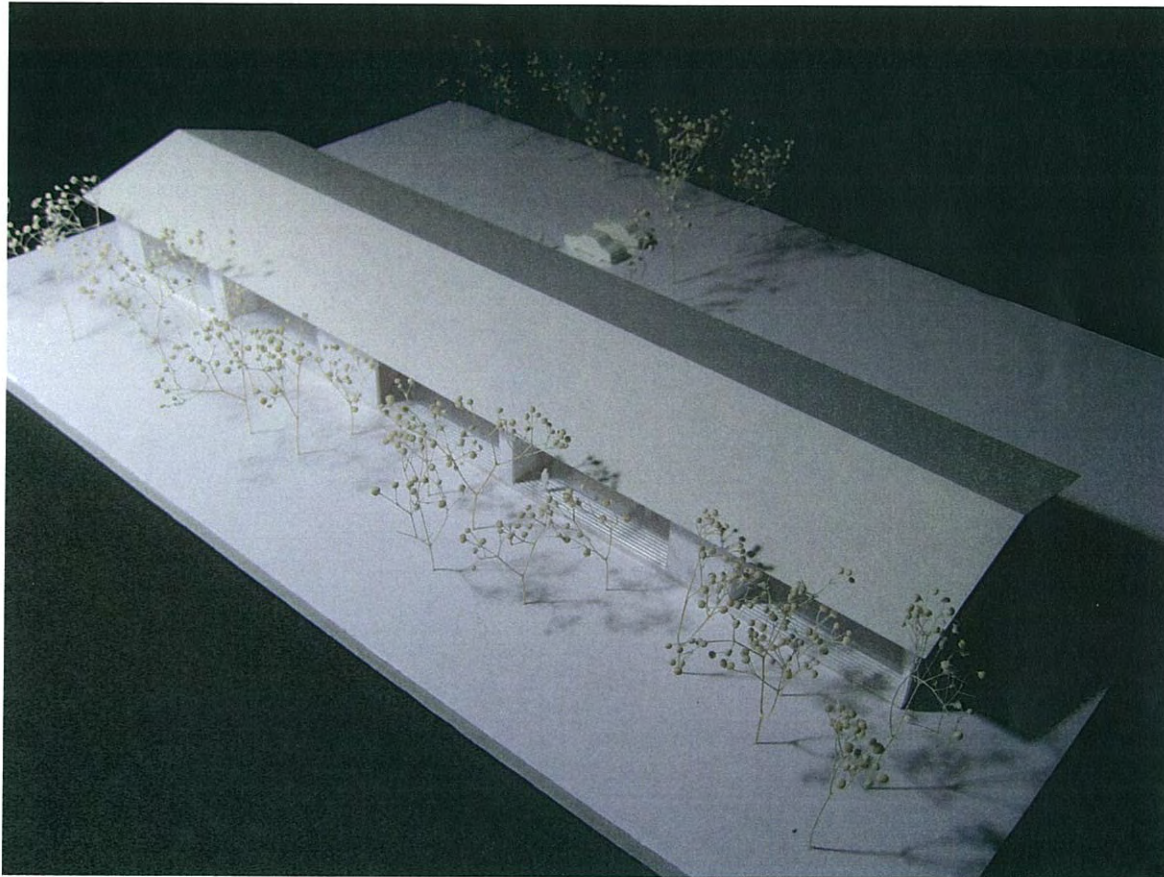
site plan 1:400

concept



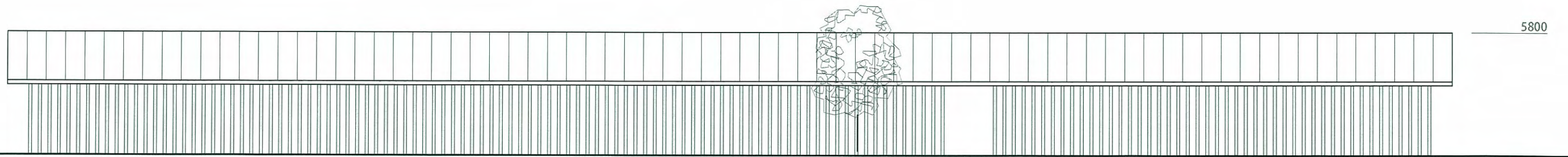
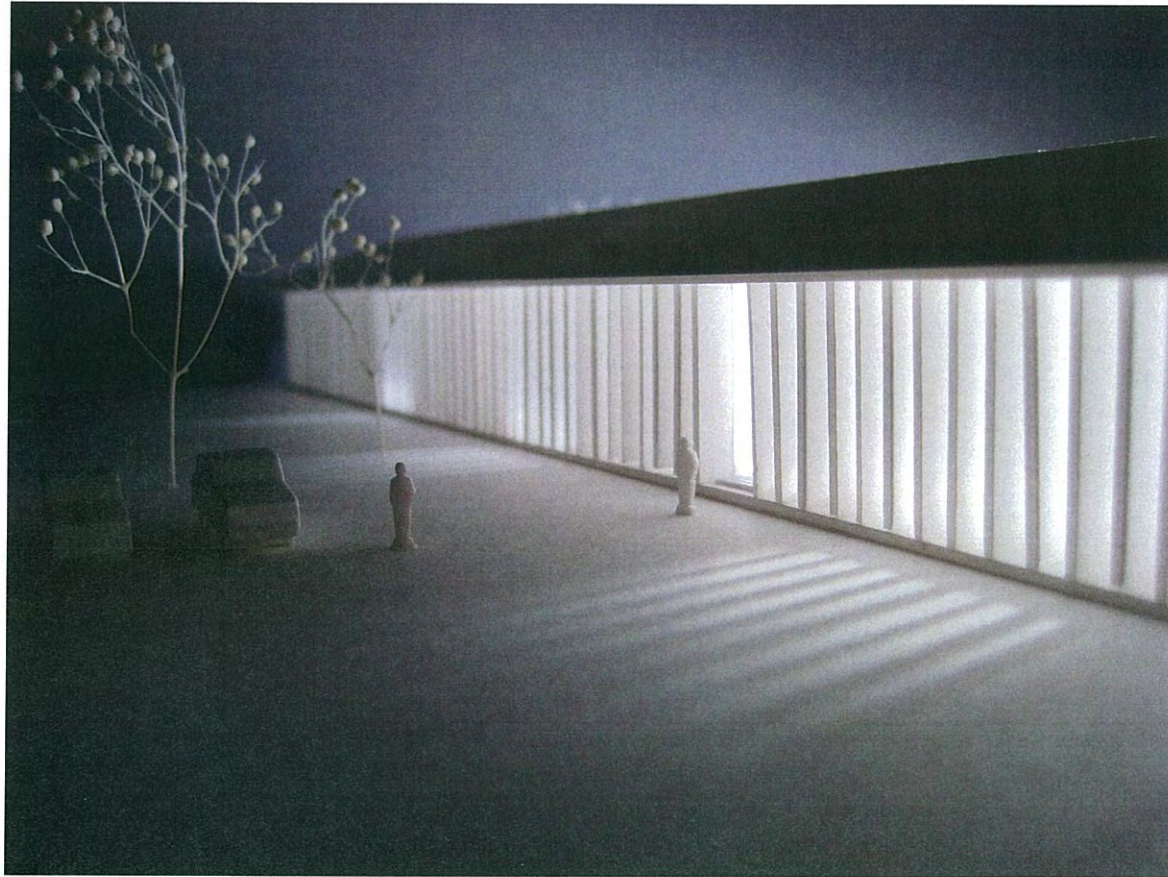
-  木に向かって2本の線を引くと
-  3方を囲んだ空間がうまれる
-  それを木に平行に繰り返すと空間と空間の間に、更に空間がうまれる
-  1の空間から溢れた活動は2の空間を介して広がっていく



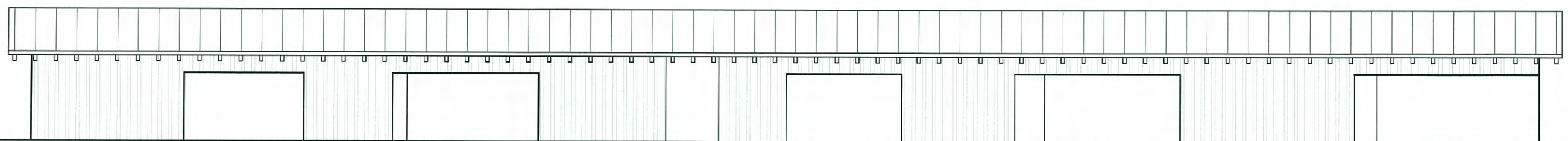
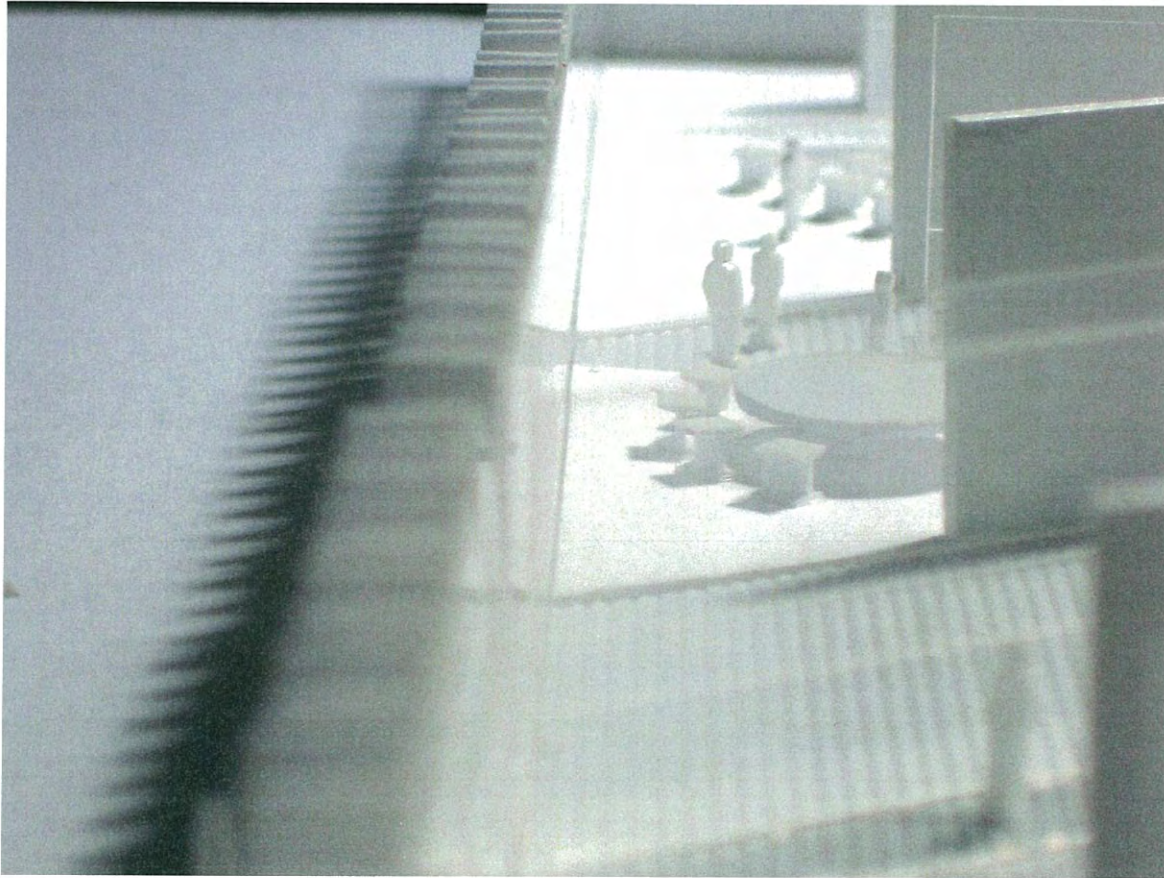


5800

west elevation 1:200



east elevation 1:200



section 1:200